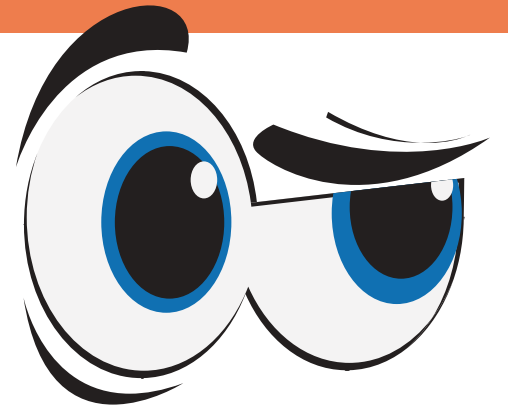


How to Secure Your PASSWORDS

Tips and Tricks on how to make sure your passwords are safe and secure.

UPPER CASE LETTERS ← **Mix Up Your Passwords** → Numbers
\$y^^b()ls ← **With** → lower case letters

Be Aware of Your Surroundings - make sure no one is watching you enter your password.



Avoid logging into private accounts while using Public WiFi.

When creating your password use a quote from your favorite TV show or Movie. Like "WheR9s+heRumhAM?!" from It's Always Sunny in Philadelphia.

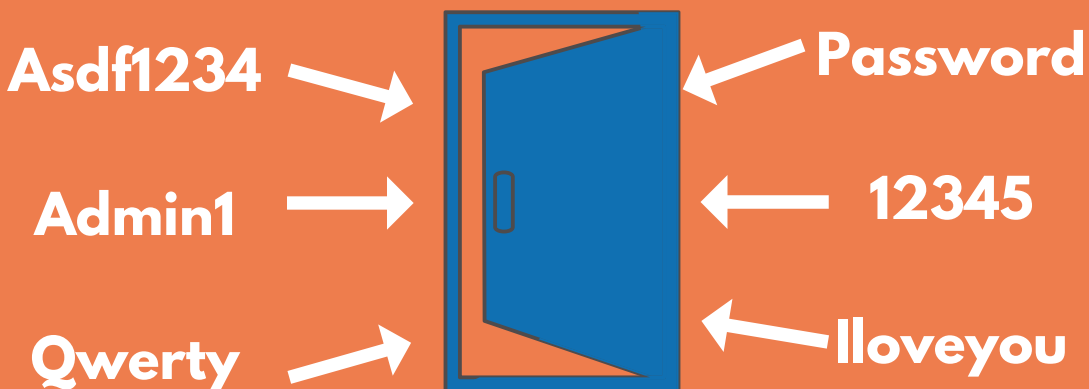


Update your passwords frequently - at least once every 3 months.

******MAKE SURE YOUR PASSWORD IS AT LEAST 15 CHARACTERS LONG******

DID YOU KNOW?

A BAD PASSWORD IS THE SAME AS AN OPEN DOOR



DON'T GET CAUGHT WITH YOUR GUARD DOWN!

**CHECK YOUR PASSWORD STRENGTH AT:
WWW.HOWSECUREISMYPASSWORD.NET**