

# DigiDocFlow®



## **& OpenText Livelink ECM**

### **Experience the simplicity of scanning directly into OpenText Livelink ECM**

With DigiDocFlow it's very easy to use the application which you already use for the storage of information for the storage of scanned documents as well. DigiDocFlow makes scanning and archiving easy. All documents can be digitalized without having to install software on local workstations. DigiDocFlow runs on a non-dedicated central server. In addition DigiDocFlow is a middleware application, which means that the user does not 'see' the software while working with it. Benefit of this is that product training is not necessary. Everyone can use it straight away.

Enterprise Content Management (ECM) is not just about controlling and managing business content and the repositories and systems where it resides. It is about understanding the relationship between people, process and content in an organization. It is about documenting how content flows within and across departments, what systems it touches and what processes it is tied to. Livelink ECM is Open Text's comprehensive and integrated content management offering that comprises the entire range of content management capabilities required to address the key challenges facing organizations today.



### **Easy scanning**

In Open Text Livelink ECM scanned documents can be stored in all folders and workspaces.

### **DigiDocFlow - Experience simplicity**

Key Benefits:

- Your documents stored directly in Open Text Livelink ECM
- Bidirectional communication between Open Text Livelink and the MFD
- Save time and money
- Optimising efficiency
- Text searchable files

**DigiDocFlow®**

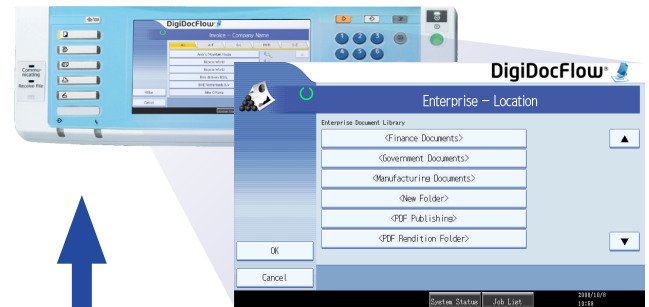


# Scan directly to Open Text Livelink ECM

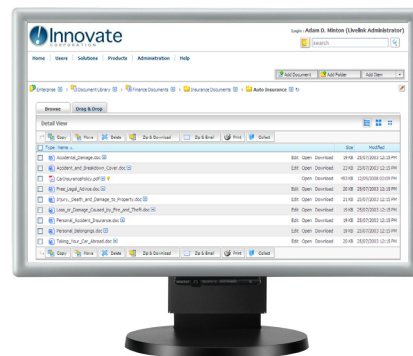
Through an online connection between DigiDocFlow and Livelink ECM it's possible to select the correct workspace and folder directly on the display of the multifunctional. DigiDocFlow displays a real time list of, for example, all folders generated from Livelink ECM on the display of the multifunctional. Users can then select the location where they want to store their document within Livelink ECM. DigiDocFlow will attach the scanned document directly to the correct workspace and folder in Livelink ECM.



Place the document you want to archive on the multifunctional and choose your predefined workflow using the DigiDocFlow startup screen.



Through bidirectional communication between OpenText LiveLink and the MFD, it's possible for the user to select the correct location to store the document in. DigiDocFlow displays a list of, for example, all folders or workplaces generated from OpenText LiveLink on the display of the multifunctional.



The document is stored in the correct location in OpenText LiveLink as text searchable PDF file based on the input entered by the user.

## Contact

### Nuance Communications, Inc.

Worldwide Headquarters  
1 Wayside Road  
Burlington, MA 01803  
United States  
E info@digidocflow.com

For more information please contact your local representative,  
Nuance Communications or check [www.digidocflow.com](http://www.digidocflow.com).



## NUANCE

### Nuance Communications International

Guldensporenpark 32  
9820 Merelbeke  
Belgium  
E info@digidocflow.com